

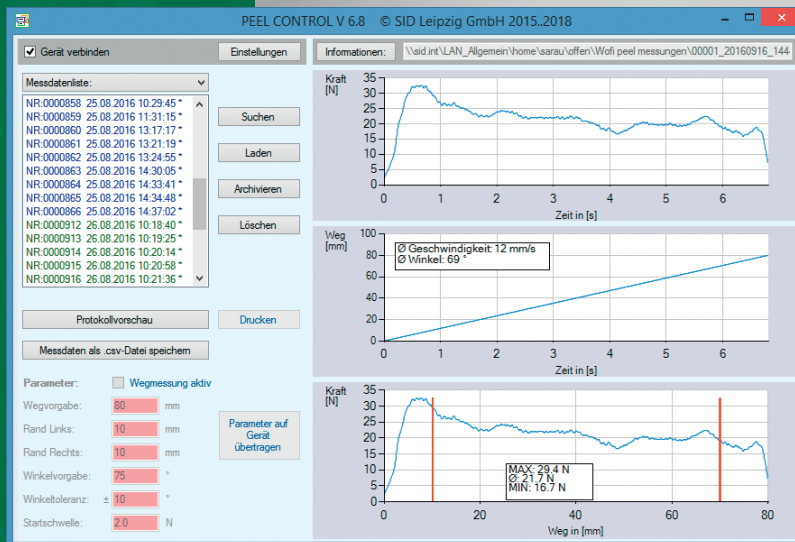
# Separating Force Gauge

## PEEL CONTROL

Device for measuring the opening force of peelable packaging or the separating force of materials that have been glued, heat-sealed or laminated together. The measured values can be shown on the device or exported to a PC. The supplied software allows an immediate documentation of the results. The compact device is ideally suited for on-site use.



Polygraphische innovative  
Technik Leipzig



Scan here for  
product video.





# Separating Force Gauge

## PEEL CONTROL

### Working Principle

After fixing the test object with the clamping device, the opening or the separating process is carried out by hand. The measured values of the entire procedure are recorded and the different parameters can be subsequently viewed and the data can be exported. PEEL CONTROL is equipped with diverse features that are inspired by practical functions from traction force testing machines. This includes, e.g. automatic zeroing, calculation of all relevant traction force parameters, graphical view of the force progression, angle measurement, signal for angle set-point adherence and the measurement of the opening stroke.



Scan here for product video.



PITSID develops, produces and sells measuring systems, supported by the Sächsisches Institut für die Druckindustrie. The measuring systems are used for quality control and to increase efficiency during adjustment and maintenance operations.

**PITSID Polygraphische innovative Technik Leipzig GmbH**  
D-04329 Leipzig  
Mommssenstrasse 2  
Tel +49 341 25942-0  
Fax +49 341 25942-99  
info@pitsidleipzig.com  
[www.pitsidleipzig.com](http://www.pitsidleipzig.com)

### Technical Data

#### Application range

Determination of the opening and separating force progression under consideration of the pulling angle and separating position, hand-held device for quality control during production

---

<b>Measurement range traction force</b>	0.0 ... 60.0 N
Resolution	0.1 N
Measurement uncertainty	± 0.2 N

---

<b>Measurement range pulling angle</b>	0 ... 180°
Resolution	1°

---

<b>Measurement range distance</b>	0 ... 250 mm
Resolution	1 mm

---

#### Hand-held device dimensions

210 x 100 x 40 mm

#### Measuring head dimensions

136 x 73 x 33 mm

#### Weight

---

Hand-held device	400 g
Measuring head	360 g

---

#### Operating temperature

15 °C ... 30 °C

#### Power supply

Battery operation: 4 x 1.5 V, Mignon type (AA), voltage supply via USB

#### Data transfer

USB (type C), wireless

#### Scope of delivery

Hand-held device including batteries and measuring head,  
Evaluation program PeelControl.exe,  
Operating manual German/English  
Carrying case